



**The Art of Exhibition Creation**



---

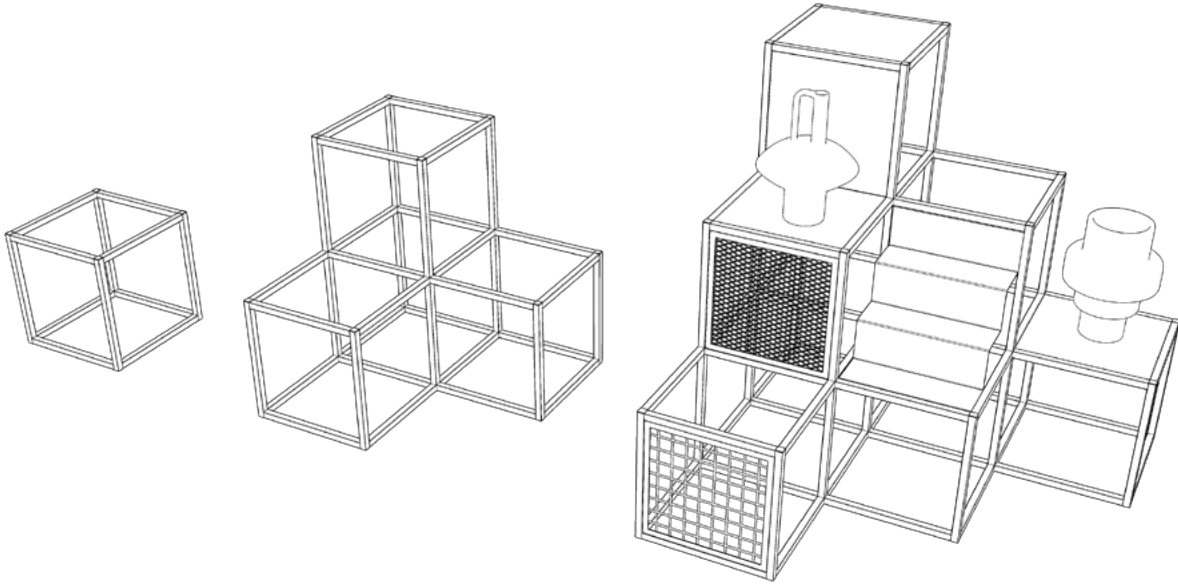
# Shaping Culture

Discover HELO FORM – the modular system  
for exhibition and display arrangements





## Module, Multiplication, Arrangement



In the world of modular systems, everything begins with one key element – a single module. It serves as the foundation of every project – the basic unit that can be multiplied and modified, creating countless combinations and configurations.

### **From Module to Complete Exhibition**

---

With the HELO FORM systems, you can easily create any type of exhibition – wall-mounted, arranged in open-plan, in small format, or spread over hundreds of square meters. Based on the modules, you can design both collection of pedestals and display shelves complemented by glass showcases, lighting, or LCD screens.



**Minisek lekarski**

Wzrost: 10-15 cm. Kwiaty: niebieskie. Liście: zielone, lancetowate. Zapach: słodki, kwiatowy. Użytkowanie: do celów leczniczych, do celów kosmetycznych.

**Wrotycz pospolity**

Wzrost: 10-15 cm. Kwiaty: białe. Liście: zielone, lancetowate. Zapach: słodki, kwiatowy. Użytkowanie: do celów leczniczych, do celów kosmetycznych.

**Minisek lekarski**

Wzrost: 10-15 cm. Kwiaty: niebieskie. Liście: zielone, lancetowate. Zapach: słodki, kwiatowy. Użytkowanie: do celów leczniczych, do celów kosmetycznych.

**Mięta**

Wzrost: 10-15 cm. Kwiaty: białe. Liście: zielone, lancetowate. Zapach: słodki, kwiatowy. Użytkowanie: do celów leczniczych, do celów kosmetycznych.

**Minisek lekarski**

Wzrost: 10-15 cm. Kwiaty: niebieskie. Liście: zielone, lancetowate. Zapach: słodki, kwiatowy. Użytkowanie: do celów leczniczych, do celów kosmetycznych.

**Minisek lekarski**

Wzrost: 10-15 cm. Kwiaty: białe. Liście: zielone, lancetowate. Zapach: słodki, kwiatowy. Użytkowanie: do celów leczniczych, do celów kosmetycznych.

**Minisek lekarski**

Wzrost: 10-15 cm. Kwiaty: białe. Liście: zielone, lancetowate. Zapach: słodki, kwiatowy. Użytkowanie: do celów leczniczych, do celów kosmetycznych.

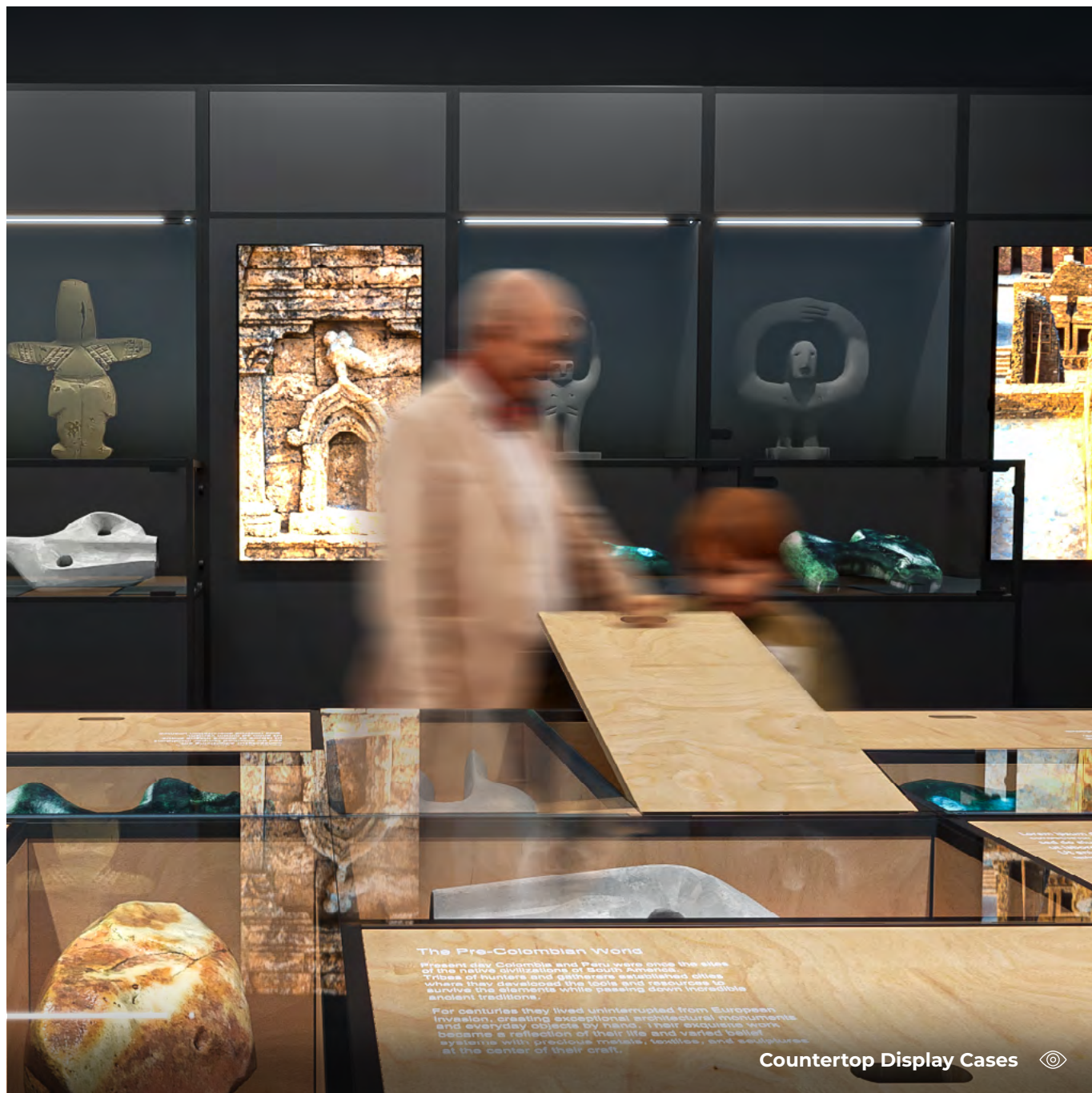
---

# Design Studio

Take a look at the exhibition projects we bring  
to life at HELO FORM Studio







#### The Pre-Colombian World

Present-day Colombia and Peru were once the sites of the native civilizations of South America. Tribes of hunters and gatherers established sites where they developed the tools and resources to survive the elements while passing down incredible ancient traditions.

For centuries they lived uninterrupted from European invasion, creating exceptional architectural monuments and everyday objects by hand. Their exquisite work became a reflection of their life and varied belief systems with precious metals, textiles, and sculptures at the center of their craft.

Countertop Display Cases





HELO FORM modular systems are designed to maximize the potential of a given space and provide an aesthetic backdrop for the displayed works.



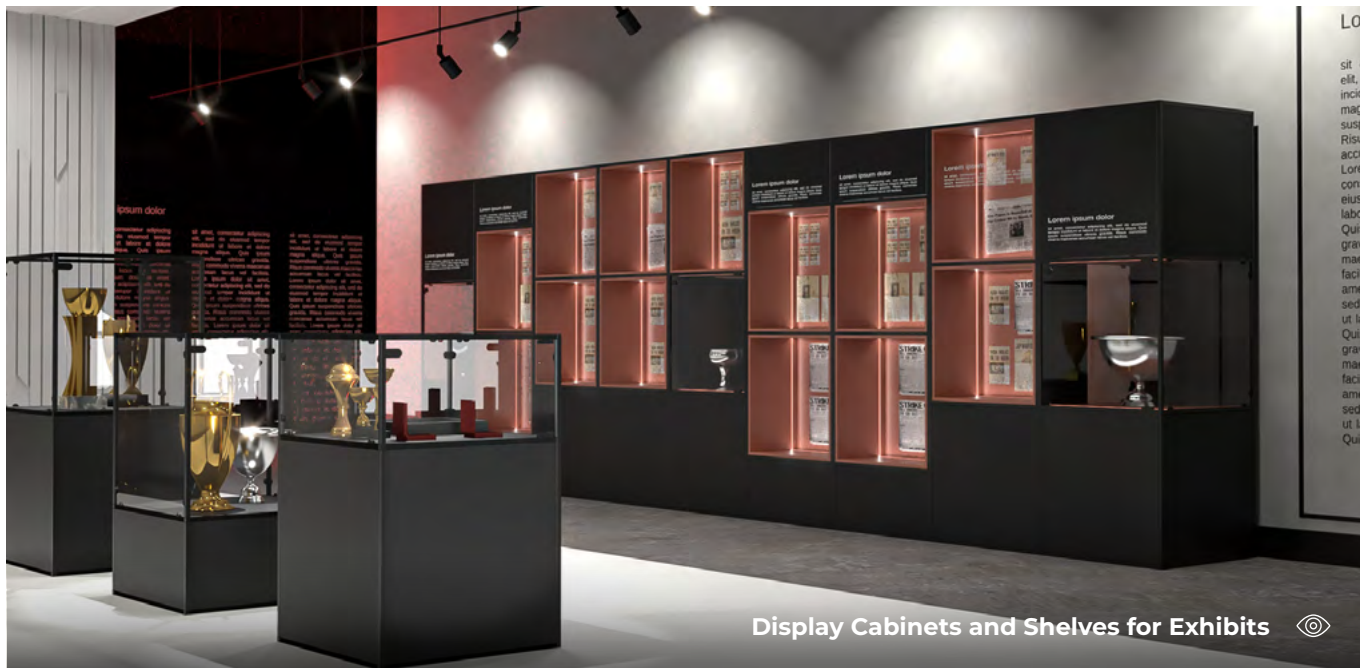
The minimalist, clean lines of HELO FORM display units offer an excellent setting for all types of exhibitions. The system is a testament to contemporary design art, showcasing both style and practicality.






© Large-Format Display Stands

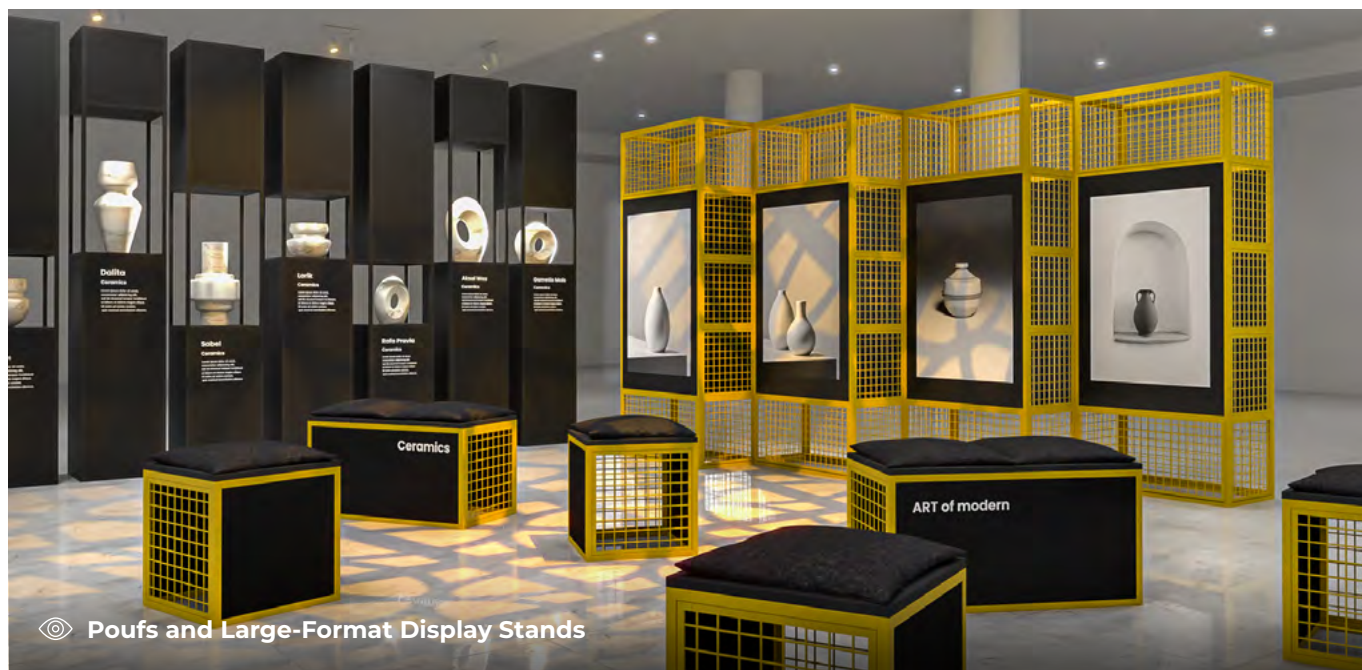




Display Cabinets and Shelves for Exhibits 



Spatial Installations 







Display Cabinets and Countertop Display Cases







---

# Exhibition in 3 Steps

See how easy it is to design HELO FORM  
exhibition systems



## Step 1

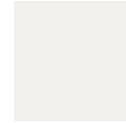
————— Create any shape and choose the color of its structure



RAL 9005



RAL 7016



RAL 9016



RAL 1036



RAL 9022



RAL 1019



RAL 6021



RAL 3015



RAL 1032



RAL 6004



RAL 5023



RAL 3005



RAL 2000



Other\*

\*Other – any color from the RAL palette



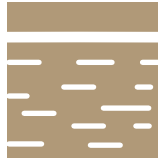


## Step 2

Choose the type and arrangement of fillings



Aluminum



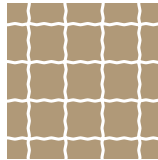
Laminated  
furniture board



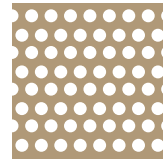
Solid wood



Expanded  
metal mesh



Woven  
mesh



Perforated  
sheet metal



Plastic panels



HPL



\* Other



## Step 3

Choose equipment and accessories



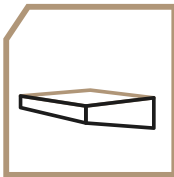
LED lighting



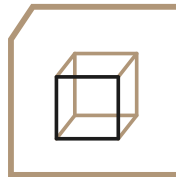
Advertising screens



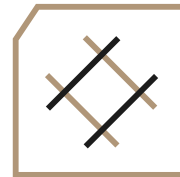
Drawers and cabinets



Shelves



Shelf inserts



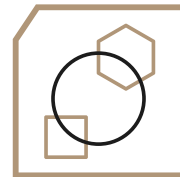
Organizers



Plant holders



Hooks and rails



Interchangeable Graphics





---

# **Selected Projects**

Get inspired by the exhibition  
arrangements of our clients



## ABOUT THE PROJECT:

**Client:** Capital Park Group – Art Norblin

**Location:** The Norblin Factory. Warsaw, Poland

**Scope of Collaboration:** Design and implementation of exhibition systems for organizing temporary and permanent exhibitions

Organizing photographic exhibitions is a challenge that requires not only the careful selection of works but also their professional presentation. Modular display stands are an excellent solution, as they can easily be integrated into any exhibition space. These solutions are highly flexible, as they can be easily modified to meet the needs of a specific exhibition. This means that a single set of modular display stands can be used multiple times, making them extremely economical and practical.

When designing display stands for Jerzy Werle's photography exhibition, our goal was to create designs that com-

bine effective communication with simplicity and elegance. Clean lines and geometric forms ensure that the display stands do not overwhelm the space but rather subtly enhance the aesthetic qualities of the presented photographs. This way, the works remain the focal point, and their reception is not disturbed by unnecessary elements.







## ABOUT THE PROJECT:

**Client:** The Warsaw Rising Museum

**Location:** Hiroshima, Japan

**Scope of Collaboration:** Design and implementation of exhibition systems for organizing temporary and permanent exhibitions

Modular display stands perfectly align with current exhibition trends that emphasize simplicity, functionality, and aesthetics. The use of modern materials such as aluminum and high-quality plastics gives them an elegant appearance suitable for various types of exhibitions, from contemporary galleries to more classic museum spaces. Despite their simplicity, modular display stands offer extensive customization options. This allows for the creation of unique arrangements that highlight the character and theme of the exhibition while maintaining stylistic coherence throughout the display.

When creating exhibition systems for the Warsaw Rising Museum, we opted for the timeless combination of black and white. This classic color combination not only adds elegance and sophistication to the exhibition but also creates a balance conducive to reflection and contemplation. The high-quality materials used in the production of modular display stands ensured their durability and sturdiness, which is crucial for intensively used exhibition spaces.









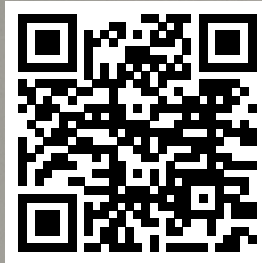
From meticulous craftsmanship to utilizing the latest design trends, at HELO FORM, we care deeply about the art of creating exhibitions.

We oppose thoughtless replication and contextless design. For us, it is crucial to find the essence. Understanding the materials we work with and situating the project in its proper environment is paramount. If you are looking for a partner who will create the perfect setting for your exhibition, we invite you to get in touch.

Tell us about your needs, and we'll take care of the rest.



Contact Form



Visit our website:  
[www.heloform.com](http://www.heloform.com)



**Clever Frame sp. z o.o.**  
ul. Grotta-Roweckiego 203  
52-214 Wrocław, Poland

T: +48 537 551 045  
E: [office@cleverframe.com](mailto:office@cleverframe.com)